



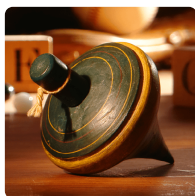
# St Cuthbert's Catholic Primary School

## Class plan - Explorers Cycle A Cycle A



Childhood

History



Long Ago

Understanding the world



Everyday Materials

Science



Mix It (Y1)

Art and design

Planned term	Autumn		
Art and design	[Mix It (Y1)] - Colour theory; Colour wheel; Primary and secondary colours. [Funny Faces and Fabulous Features] - Portraiture; Collage		Colour theory; Colour wheel; Primary and secondary colours
Suggested text	Wilfrid Gordon McDonald Partridge - Mem Fox. [Our Wonderful World] - Here We Are - Oliver Jeffers		
Memorable experience	Childhood past and present. [Shade and Shelter] - Investigating shelters. [Funny Faces and Fabulous Features] - Exploring portraits		
Innovate challenge	Childhood knowledge organisers. [Everyday Materials] - Let's investigate focus: Observing, measuring and recording. [Mix It (Y1)] - Colour challenge. [Shade and Shelter] - Designing and building a play den. [Our Wonderful World] - Geographical enquiry. [Human Senses] - Let's investigate focus: Planning and carrying out. [Funny Faces and Fabulous Features] - Collage creators	Let's investigate focus: Observing, measuring and recording	Colour challenge
Mathematics	Number and Place Value Addition Money Time Length Symmetry Subtraction Multiplication Fractions - halves and quarters		
Music	Charanga - Me! Production Practice		



Childhood

History



Long Ago

Understanding the world



Everyday Materials

Science



Mix It (Y1)

Art and design

Design and technology

[Shade and Shelter] - Investigating existing products; Designing and making shelters and dens; Prototypes; Safety rules; Materials. [Funny Faces and Fabulous Features] - Stitching to join materials; Embellishing

History

Historical vocabulary; Historical artefacts; Timelines; Everyday life and childhood in the 1950s; Significant events - Queen's coronation; Enquiry

Religious education

The Way, The Truth, The Life

Science

[Everyday Materials] - Materials; Natural materials; Human-made materials; Grouping materials; Properties of materials; Venn diagrams; Comparing and testing materials; Working scientifically - Identifying and classifying, Observing changes over time, Comparative test, Pattern seeking, Research. [Shade and Shelter] - Naming everyday materials; Properties and uses of materials. [Human Senses] - Humans; Labelling body parts; Counting body parts; Similarities and differences in humans; Five senses - sight, hearing, touch, smell, taste; Senses and danger; Sensory loss and assistive tools; Sense of touch investigation; Working scientifically - Identifying and classifying, Comparative test, Pattern seeking, Research

Materials; Natural materials; Human-made materials; Grouping materials; Properties of materials; Venn diagrams; Comparing and testing materials; Working scientifically - Identifying and classifying, Observing changes over time, Comparative test, Pattern seeking, Research

Computing

Teach Computing  
Computing Systems and Networks  
Creating Media

Geography

Settlements; Changes over time. [Our Wonderful World] - Physical and human features; Picture maps; Cardinal compass points; Equator and hemispheres; Continents; Oceans; Countries and capital cities of the UK; Protecting natural environments; Fieldwork



Childhood

History



Long Ago

Understanding the world



Everyday Materials

Science



Mix It (Y1)

Art and design

---

Personal, social and health education

Stages of life; Changes

---

PE

Introduction to PE: Unit 2  
Sending and Receiving  
Team Building

---

HRSE

Created and Loved by God  
Religious Understanding  
Emotional Well-being Life Cycles



Shade and Shelter

Design and technology



Build It Up

Understanding the world



Our Wonderful World

Geography



Big Wide World

Understanding the world

Planned term

Spring

Suggested text

Here We Are - Oliver Jeffers

Memorable experience

Investigating shelters

Innovate challenge

Designing and building a play den

Geographical enquiry

Mathematics

Addition and subtraction  
 Estimation 10 more/less than a 2-digit number  
 Money Weight Time  
 Multiplication and Division  
 Doubling/Halving numbers  
 Odd and Even Place Value

Design and technology

Investigating existing products; Designing and making shelters and dens; Prototypes; Safety rules; Materials

Science

Naming everyday materials; Properties and uses of materials

Geography

Physical and human features; Picture maps; Cardinal compass points; Equator and hemispheres; Continents; Oceans; Countries and capital cities of the UK; Protecting natural environments; Fieldwork



Human Senses

Science



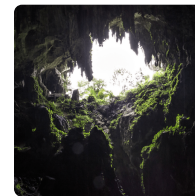
Funny Faces and Fabulous Features

Art and design



Bright Lights, Big City

Geography



Let's Explore

Understanding the world

Planned term			Spring
Art and design		Portraiture; Collage	Drawing
Suggested text			Topsy and Tim Visit London – Jean and Gareth Adamson
Memorable experience		Exploring portraits	Local landmarks
Innovate challenge	Let's investigate focus: Planning and carrying out	Collage creators	Marley's trip to London
Mathematics			Addition and subtraction Estimation 10 more/less than a 2-digit number Money Weight Time Multiplication and Division Doubling/Halving numbers Odd and Even Place Value
Music			Nursery rhymes Charanga - In the Groove Charanga - Your Imagination
Design and technology		Stitching to join materials; Embellishing	
History			Significant event – Great Fire of London
Religious education			The Way, The Truth, The Life
Science	Humans; Labelling body parts; Counting body parts; Similarities and differences in humans; Five senses – sight, hearing, touch, smell, taste; Senses and danger; Sensory loss and assistive tools; Sense of touch investigation; Working scientifically – Identifying and classifying, Comparative test, Pattern seeking, Research		
Computing			Searching the web; Algorithms; Logical reasoning; Programming; Common uses of information technology Teach Computing - Programming A Data and Information
English			Postcards; Directions; Adventure narratives



Human Senses

Science



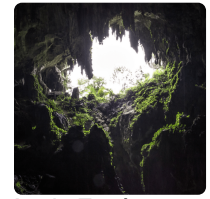
Funny Faces and Fabulous Features

Art and design



Bright Lights, Big City

Geography



Let's Explore

Understanding the world

---

Geography

Local landmarks; Countries and capital cities of the UK; Physical features of the UK; Settlements; Human features; Weather and seasons; London - a capital city; Landmarks; Aerial images; Maps; Directions - locational and directional language; Geographical similarities and differences

---

Personal, social and health education

Speaking, listening and sharing

---

PE

Ball Skills: Unit 2  
Fundamentals

---

HRSE

Created to Love Others  
Religious Understanding  
Keeping Safe



Seasonal Changes

Science



Rain and Sunrays

Art and design



Puddles and Rainbows

Understanding the world



Taxi!

Design and technology

Art and design		Motifs; Line and shape; Texture; Collagraphy	
Memorable experience		Weather motifs	Investigating wheels, axles and chassis
Innovate challenge	Let's investigate focus: Asking and answering questions	Creating weather collagraphs	Making a London taxi
Design and technology			Mechanisms – wheels, axles and chassis
Science	Seasons; Seasonal changes in deciduous and evergreen trees; Seasonal changes in animals; Weather; Seasonal weather; Day length; Investigating the Sun; Measuring wind; Measuring temperature; Measuring precipitation; Weather forecasting; Working scientifically – Observing changes over time, Identifying and classifying, Pattern seeking, Comparative test, Research		





Marvellous Machines

Understanding the world



School Days

History



Ready Steady Grow

Understanding the world



Animal Parts

Science

Planned term	Summer	
Art and design	[Street View] - 3-D murals; Buildings; Significant people – James Rizzi	
Suggested text	Whiffy Wilson: The Wolf who wouldn't go to school – Caryl Hart	
Memorable experience	Our school's history. [Street View] - Exploring street views. [Chop, Slice and Mash] - Investigating sources of food	
Innovate challenge	Planning an assembly. [Plant Parts] - Let's investigate focus: Reporting and concluding. [Animal Parts] - Let's investigate focus: Observing, measuring and recording. [Street View] - Mural makers. [Chop, Slice and Mash] - Designing and making a supermarket sandwich	Let's investigate focus: Observing, measuring and recording
Mathematics	Fractions – halves, quarters of shapes and amounts Addition and Subtraction Time 3D shapes Multiplication and division Money	
Music	Charanga - Zootime Charanga - Round and Round	
Design and technology	[Chop, Slice and Mash] - Sources of food; Food preparation techniques; Hygiene rules; Designing and making salads and sandwiches	
History	Historical vocabulary; Historical artefacts; Timelines; Present day schools; Our school; Victorian era; Victorian schools; Significant people – Samuel Wilderspin	
Religious education	The Way, The Truth, The Life	





Marvellous Machines

Understanding the world



School Days

History



Ready Steady Grow

Understanding the world



Animal Parts

Science

Science

[Plant Parts] - Wild and garden plants; Seasonal changes; Plant parts; Seeds and bulbs; Investigating leaves; Importance of plants; Working scientifically - Identifying and classifying, Observing changes over time, Pattern seeking, Research, Comparative test. [Animal Parts] - Animals' body parts; Animal groups - amphibians, birds, fish, invertebrates, mammals, reptiles; Carroll and Venn diagrams; Pets; Carnivores, herbivores and omnivores; Earthworms; Working scientifically - Identifying and classifying, Comparative test, Pattern seeking, Research

Animals' body parts; Animal groups - amphibians, birds, fish, invertebrates, mammals, reptiles; Carroll and Venn diagrams; Pets; Carnivores, herbivores and omnivores; Earthworms; Working scientifically - Identifying and classifying, Comparative test, Pattern seeking, Research

Computing

Teach Computing  
Creating Media  
Digital Music  
Programming B  
Programming Quizzes

English

List poems; Diaries; Letters

Geography

Fieldwork; Human and physical features; Maps; Local environment; Changes over time

Personal, social and health education

Special people; Positive contributions

PE

Dance Athletics

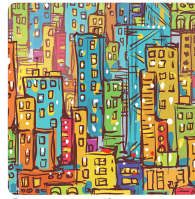
HRSE

Created to Live in the Community  
Religious Understanding  
Living in the Wider World



Animal Safari

Understanding the world



Street View

Art and design



Chop, Slice and Mash

Design and technology



Y1 WRM – Autumn (v3.0)

Mathematics

Art and design

3-D murals; Buildings;  
Significant people – James Rizzi

Memorable experience

Exploring street views

Investigating sources of food

Innovate challenge

Mural makers

Designing and making a supermarket sandwich

Mathematics

Block 1: Number – Place value; Block 2: Number – Addition and subtraction; Block 3: Geometry – Shape

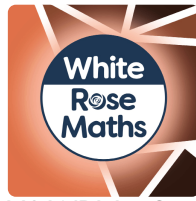
Design and technology

Sources of food; Food preparation techniques; Hygiene rules; Designing and making salads and sandwiches



Y1 WRM – Spring  
(v3.0)

Mathematics



Y1 WRM – Summer  
(v3.0)

Mathematics



Y1 Computing

Computing

---

Mathematics

Block 1: Number – Place value; Block 2: Number – Addition and subtraction; Block 3: Number – Place value; Block 4: Measurement – Length and height; Block 5 – Measurement – Mass and volume

Block 1: Number – Multiplication and division; Block 2: Number – Fractions; Block 3: Geometry – Position and direction; Block 4: Number – Place value (within 100); Block 5 – Measurement – Money; Block 6 – Measurement – Time

---

Computing

Staying safe online; Algorithms; Programming and debugging; Using data